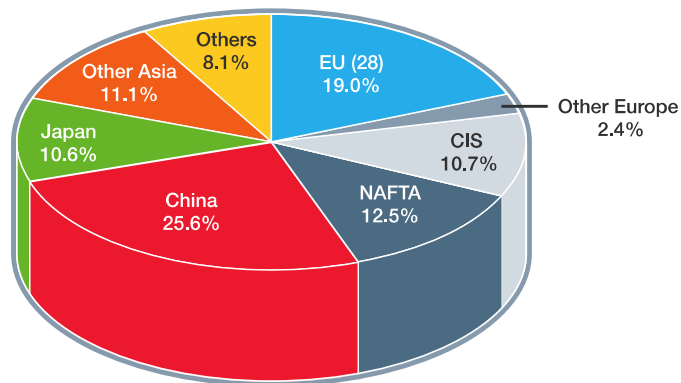




2004

Crude steel production

World total: 1,064 million tonnes



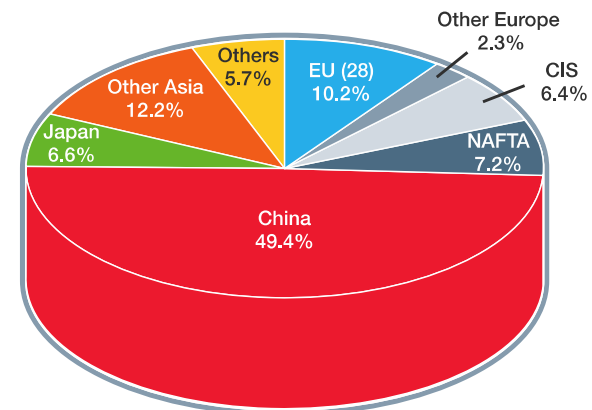
Others comprise:

Africa	1.6%	Central and South America	4.4%
Middle East	1.3%	Australia and New Zealand	0.8%

2014

Crude steel production

World total: 1,665 million tonnes

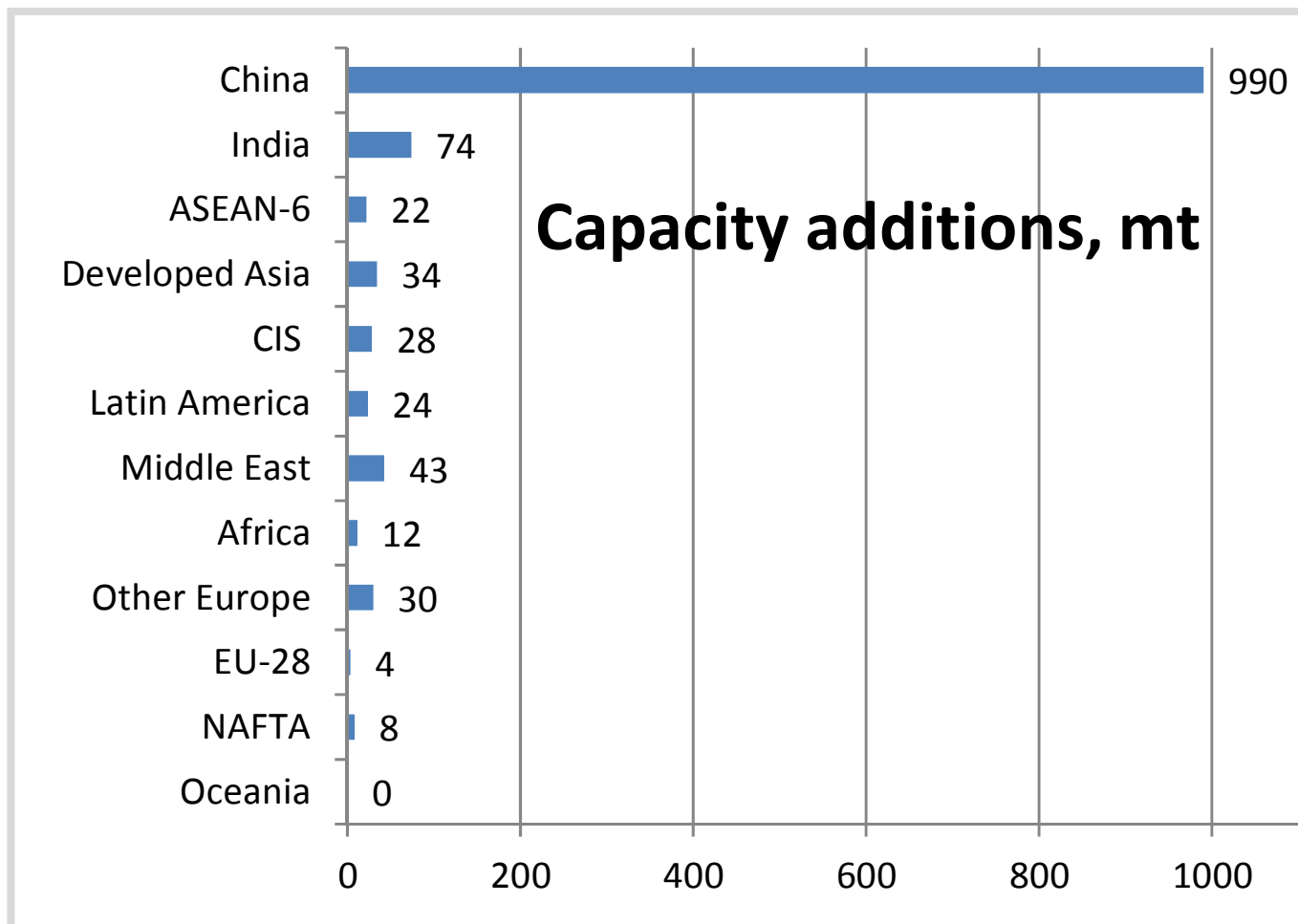


Others comprise:

Africa	0.9%	Central and South America	2.8%
Middle East	1.7%	Australia and New Zealand	0.3%



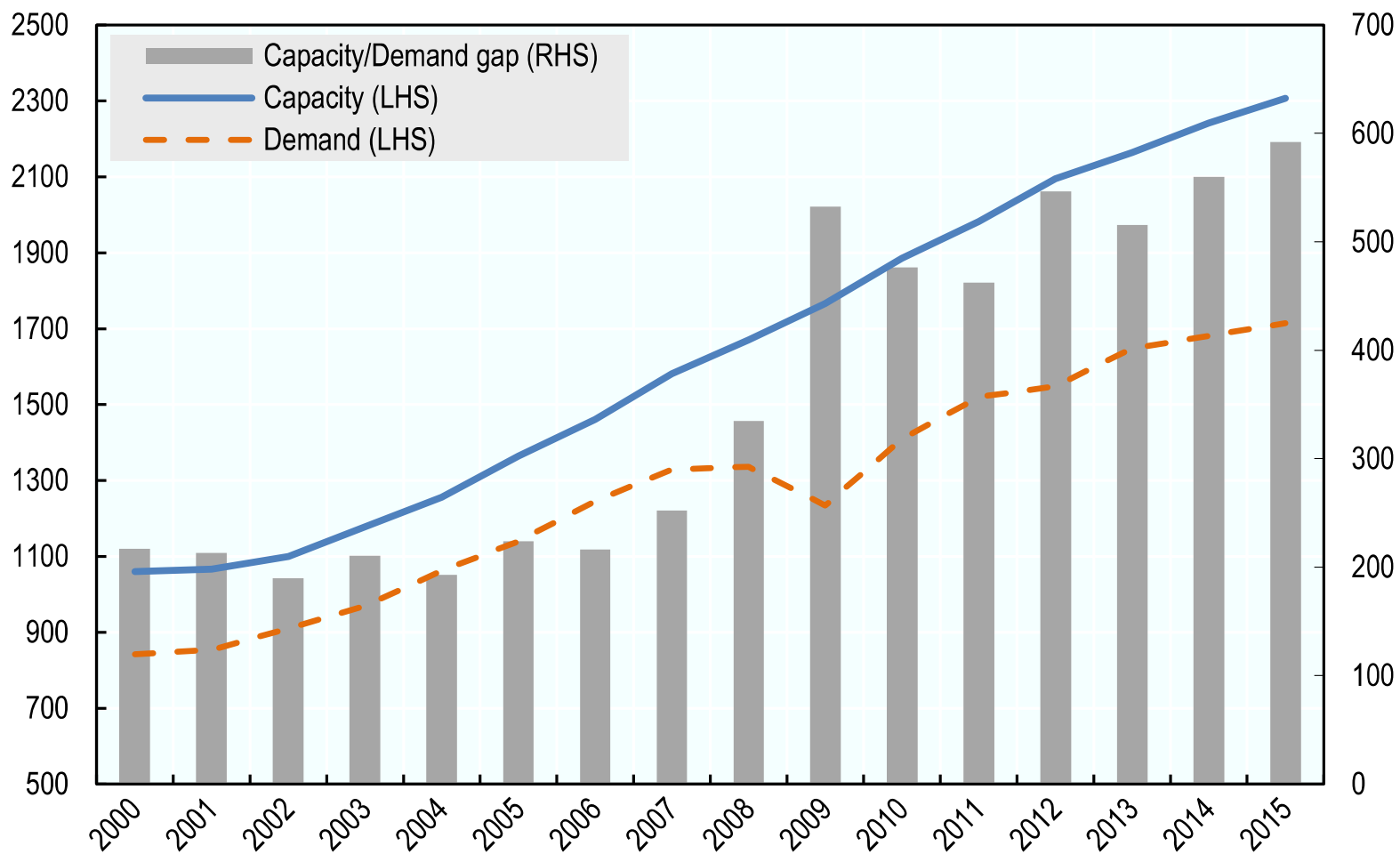
Crude steelmaking capacity additions by regions, 2000-2014



Fuente: OCDE

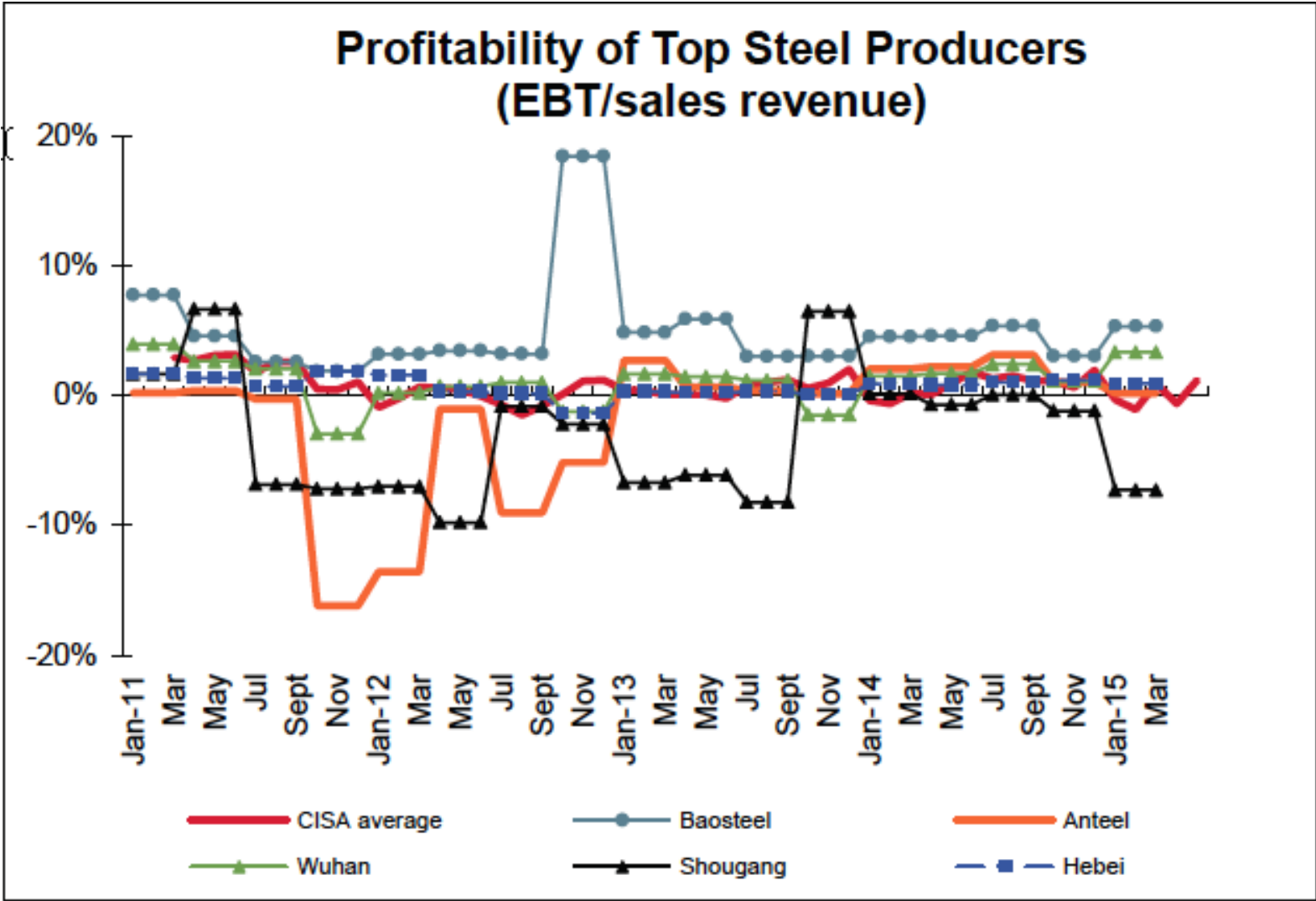


World crude steel capacity (nominal) and demand



Fuente: OECD for nominal capacity and the World Steel Association for demand.

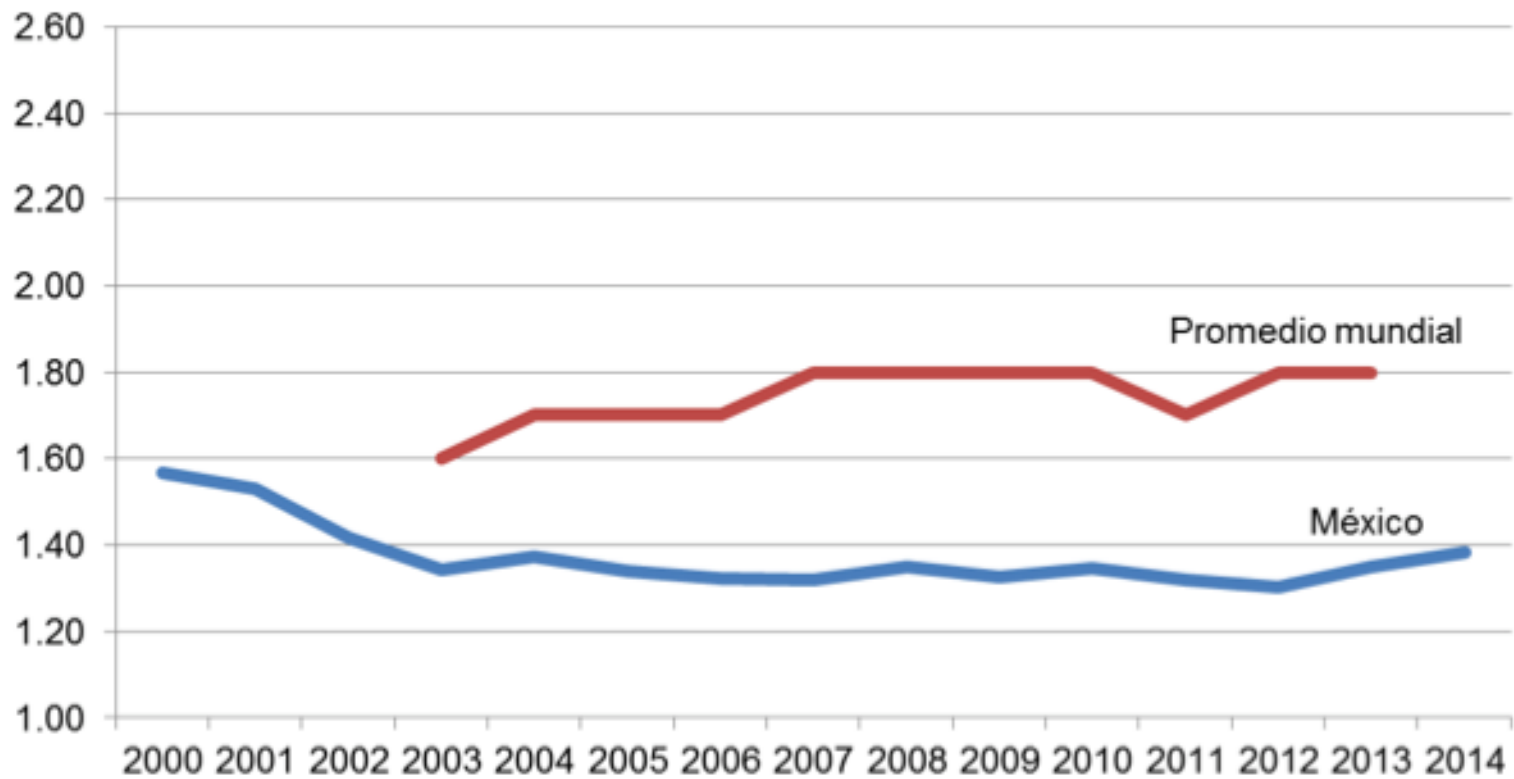




Fuente: OCDE

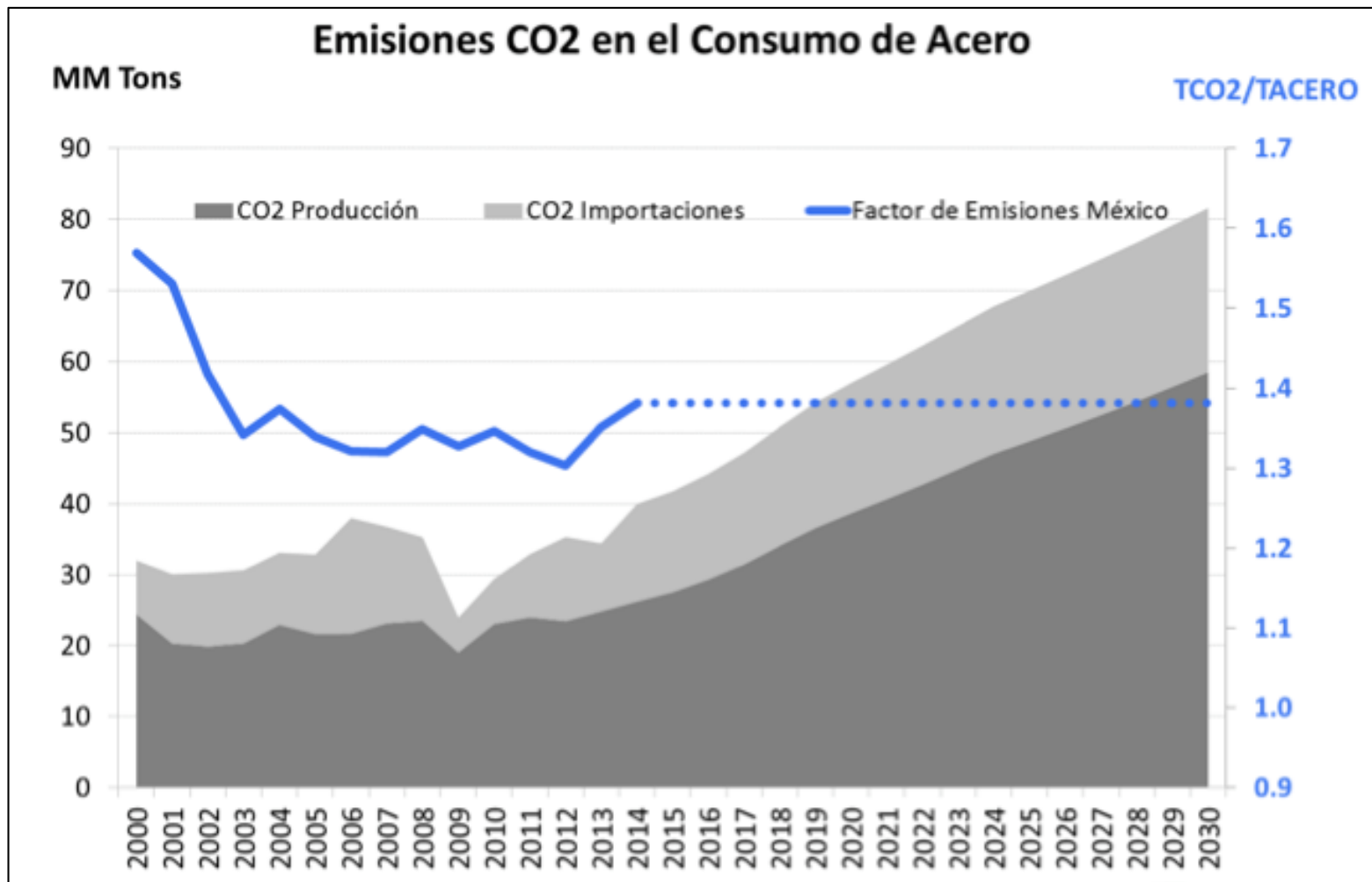


Factor de Emisiones (Tons. CO2 / Tonelada de Acero)



Fuente: CANACERO





Fuente: CANACERO

